



IMPACT OF HEART DISEASE¹



Cardiovascular or heart disease is a broad term for a range of diseases affecting the heart and blood vessels. Every three minutes a person in the UK suffers a heart attack. Of the 175,000 heart attacks that are currently diagnosed each year in the UK, approximately 110,000 are among men and 65,000 are among women.



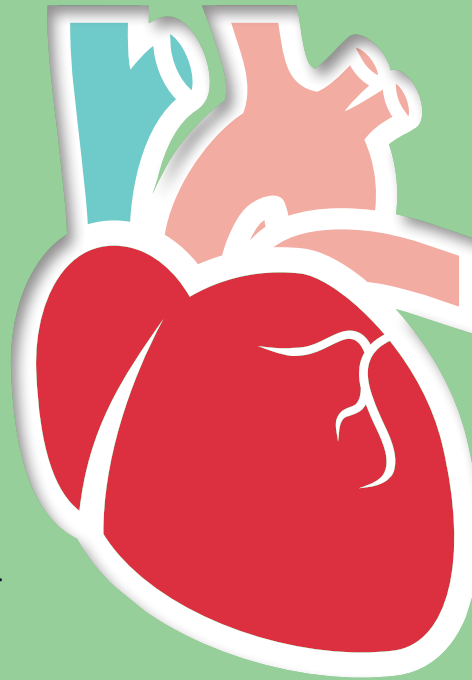
GOOD NEWS⁶

A *British Medical Journal* study suggests that Abbott's high sensitive troponin test may help pick up twice as many women's heart attacks as standard blood tests.

IMPORTANCE to WOMEN⁵



Abbott's high sensitive troponin test, not available in the U.S., can measure very low levels of cardiac troponin. This is especially important for women, who often have lower levels of troponin than men.



HEART ATTACK SYMPTOMS²

Chest pain is the most common symptom. Some symptoms are more likely to be experienced by women than men, including:

- Shortness of breath
- Nausea/vomiting
- Back or jaw pain



WOMEN and HEART ATTACKS^{3,4}

Globally, twice as many women die from heart attacks and strokes than all cancers combined. Women under 55 are at the highest risk of misdiagnosis of heart attacks.



WHAT IS TROPONIN?



Cardiac troponin is a protein that can indicate injury to the heart muscle. Troponin levels rise when heart cells are damaged. Doctors use blood tests to detect changes in these levels to help diagnose heart attacks.

KNOW THE SYMPTOMS AND ACT FAST

Heart Attacks: How Women Can Beat the Odds

If you experience any symptoms of a heart attack, call emergency services immediately or seek medical attention. For more information about heart health, please visit: www.abbott.com and www.worldheart.org.

Abbott's ARCHITECT *STAT* High Sensitive Troponin-I (hsTnI) test is commercially available in Europe, as well as Canada, Australia, New Zealand, Brazil and China. The test is in development and not commercially available in the United States.

REFERENCES

1. Cardiovascular disease statistics: Headline statistics. British Heart Foundation. Jan. 19, 2015. Website: <https://www.bhf.org.uk/-/media/files/research/heart-statistics/cardiovascular-disease-statistics-headline-statistics.pdf>. Accessed Jan. 19, 2015.
2. Heart attack symptoms in women. American Heart Association. Oct. 10, 2012. Website: www.heart.org/HEARTORG/Conditions/HeartAttack/WarningSignsofHeartAttack/Heart-Attack-Symptoms-in-Women_UCM_436448_Article.jsp. Accessed Oct. 8, 2014.
3. WHO publishes results of largest-ever global collaboration on heart disease. World Health Organization press release. September 2003. Website: www.who.int/mediacentre/news/releases/2003/pr72/en/. Accessed Oct. 8, 2014.
4. Pope JH, Aufderheide TP, Ruthazer R, et al. Missed diagnoses of acute cardiac ischemia in the emergency department. *New England Journal of Medicine*. 2000; 342:1163-1170.
5. Abbott ARCHITECT *STAT* High Sensitive Troponin-I Product Insert (PI), November 2013. B3P250 G4-5779/R04.
6. Anoop S, Mills N, Griffiths M, et al. High-sensitivity cardiac troponin and the underdiagnosis of myocardial infarction in women: A prospective cohort study. *British Medical Journal*. Website: <http://www.bmj.com/cgi/doi/10.1136/bmj.h15>